

Counseling Program Advisory Board Meeting 2012

ABBE FINN, PH.D.
MADelyn ISAACS, PH.D.
SIGNE KASTBERG, PH.D.
BETH NEHAMKIN, M.ED.
RUSSELL A. SABELLA, PH.D.

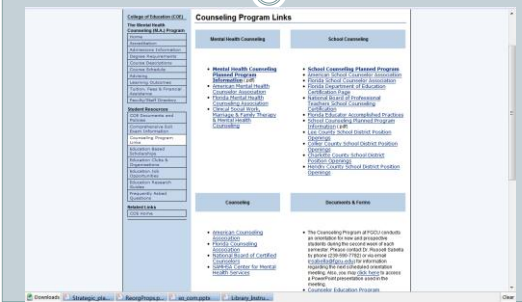
Faculty Contact Information

- Abbe Finn, Ph.D. (239-590-7772)
Afinn@fgcu.edu
- Madelyn Isaacs, Ph.D. (239-590-7785)
misaacs@fgcu.edu
- Beth Nehamkin, M. Ed. (239-590-1373)
bnehamk@fgcu.edu
- Signe Kastberg, Ph.D. (239-590-7798)
skastberg@fgcu.edu
- Russell Sabella, Ph.D. (239-590-7782)
rsabella@fgcu.edu

Counseling Program Mission

- *The mission of Florida Gulf Coast University's (FGCU) Counseling Program is to prepare exemplary professional practitioners, leaders, and scholars. The program uses a research-practitioner approach that integrates the use of current technology, supervised field experiences, scholarly inquiry, and intellectual and creative resources to work with an increasingly diverse and global society. The program trains counselors who work in pre-K through grade 12 schools, social service, government agencies, hospitals, community organizations, and private practice. The FGCU counseling program educates well-rounded counselors who demonstrate competence included in the high standards as set forth by our accreditation and professional organizations.*

Maintained Program Progress




Maintained Program Progress



Florida DOE Program Approval

Maintained Program Progress



Fully Accredited By CACREP

Maintained Program Progress



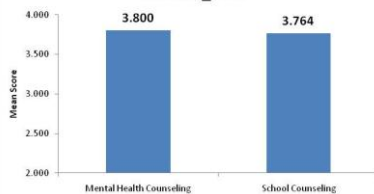
LiveText's Accreditation Management System™ provides institutions with the most advanced, complete, and user-friendly web-based tools for developing, assessing, and measuring student learning and more. With LiveText's Accreditation Management System, institutions can provide its students, faculty, administration, and stakeholders the best assurance of its commitment to accountability, continuous improvement, and excellence in education. Counseling students will be required to purchase a license for LiveText in their first course.

Program Composition

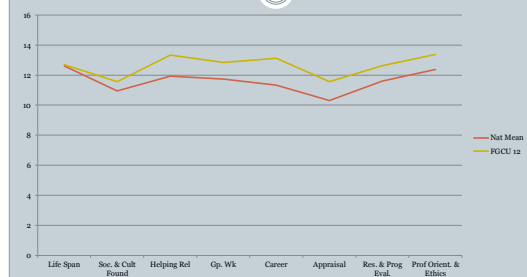
- Our Students:
 - approximately 150 students currently enrolled
 - majority are employed full-time
 - broad age range
 - mostly female
 - About 2/3 Clinical Mental Health Counseling, 1/3 School Counseling

SC and MH

Independent Samples T-Test of Mental Health Counseling and School Counseling on CUM_GPA



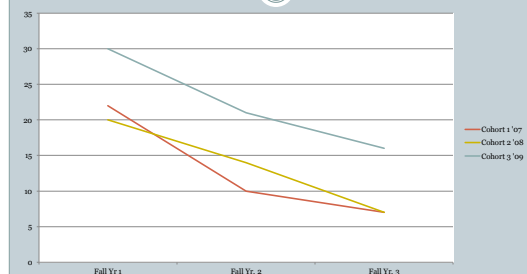
FGCU Mean on CPCE Compared with National Mean



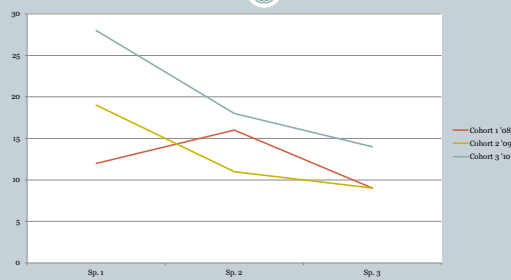
Program Retention

- For School and Clinical Mental Health Counseling
- CMHC: 2007-2010; 2008-2011; 2009-2012
- School Counseling: 2008-2010; 2009-2011; 2010-2012

Program Retention for Clinical Mental Health Counseling



School Counseling Cohort Data



Program Improvements in 2010-2012



Program Improvements

- **Special Populations Course**
 - FGCU counseling program faculty updated the Special Populations Course to include more knowledge and skills in the area of special needs populations, research on cultural diversity. This update was in response to FL DOE Competencies and Educator Accomplished Practices.
 - This course now taught for School Counselor in a separate section.

Program Improvements

- Change of name for the Mental Health Counseling Program to: Clinical Mental Health Counseling Program.
- Better monitor students signing off on ethical statements including COE and counseling.
- More forms now online including internship application and updated Clinical Mental Health Internship sites.

Program Improvements

- **Revised Internship Application Process:**
 - Application to Internship Coordinator October/March
 - Applicant lists of internship preferences in hierarchical order
 - Internship Coordinator checks for availability at the listed sites
 - When approved, Internship Coordinator contacts student so that he/she can make an interview appointment.

Program Improvements

- More structured training earlier in the program (SFBC in Advanced Practicum and Internship 1)
- Alumni, Graduate, and Employer Surveys now online and are distributed by the College of Education.
- NCATE self-study, site visit, and preliminary recommendations.
- The Internship Manual has been updated and will continue to be modified to reflect changes in the program.

Program Improvements

- Human Sexuality, Cross-cultural counseling, Special Populations course, and Diagnostics are being upgraded.
- New Instruments for the Assessment course.
- Newly hired 20 hours/week Internship Coordinator.
- Psychological First Aid is part of the curriculum for Clinical Mental Health as well as School Counselors.

Program Improvements

- Revisions to Admission Process
 - Push back of the application deadlines from July 1 & 15 for Fall admission to March 15th for School and Clinical Mental Health Counseling Summer and Fall Admissions.
 - Creation of a hierarchy of applicants based upon GPA, test scores, quality of scores on the Recommendation Forms; Student's statement.

Revised Admission Process

- Based on the outcome, the candidates will be invited to FGCU for an interview. The interviews will be individual and group.
- Students will be placed on a waiting list if the do not meet all of the highest criteria.
- Cohort size will be limited to 30 students in each group.
- Admission policy may be changed from "either 3.0 GPA of test scores" to "both 3.0 GPA and test score".

Future Tasks

- More structured exit interview for graduates and those leaving the program.
- Recruitment/Retention plan.
- Online internship supervisor *orientation*.
- Hire a full time faculty person.
- Self-study for CACREP 2013

Feedback ...

- What do you see the strengths of the program?
- What do you see as areas for improvement for our program and graduates?
- Other comments about our program and processes.



Feedback from the group ... Strengths

- Strength- real world activities related to school counseling job
- The community partners report good experiences with interns. Many interns are hired by the agency where they intern.
- Most interns who want jobs get them.
- The School Counseling Narrowing the gap project demonstrating positive impact of counseling on student learning.
- NCATE and FL DOE require FGCU to demonstrate that our School Counseling programs and candidates have a positive impact on student learning.
- FGCU interns versus other interns: Consensus that FGCU interns are better prepared because faculty gets them into practicum and internship earlier. This works because candidates get the opportunity to see if this is a good fit for them before going too far into the program.

Feedback from the group ... Strengths

- The staff and coordinator from Salvation Army praised the focus on solutions focused brief therapy techniques.
- The representatives appreciate that FGCU professors come to their schools.
- Anticipating future needs is great... Like grant writing information in the Organization and Administration course for Mental Health Program candidates.
- Focus in data and data driven decision making.
- FGCU candidates recognize the importance of Data collection .

Feedback from the group ... Improvements

- Need to teach basics of case noting
- Intro to treatment planning .. Self notes formatting
- Candidates need to understand the difference between informal and professional communication.
- They need a better understanding of communication etiquette .. Texting, phone etiquette, and the risks of tweets, Facebook. They need to focus on relating better with the diverse population that they are working with.
- Encourage them to join their local organizations...

Feedback from the group ... Improvements

- Program should explain the difference between Community Counseling versus Clinical Mental Health program? This comes up because of the proposal to change the name to Clinical Mental Health Counseling. Even the advisory board didn't quite understand it.
- Guidelines for interns .. Have faculty go to in services to tell locations what to expect when they take on an intern...
- For admissions: Add an advisory member to help out in candidate interviews.
- More stringent requirements coming out of practicum....issues with entering into Adv. Prac. Faculty should not advance candidates if they are not ready. They need to know the difference between counseling and giving advice.

Feedback from the group ... Improvements

- Admission changes... We have to transition to new dates this year...
- Even though the faculty are teaching solutions focused brief counseling, some of the candidates aren't implementing it in the internships.
- On the other hand, some candidates are going into theory too soon in Practicum when they really need to practice their skills.
- Some of the students are not dressing professionally in class. There is a suggestion that the candidates have a dress code emphasizing professionalism in the Counseling Graduate Student Handbook.

